



PRCS NAIL STRIP PANEL SYSTEM
INSTALLATION GUIDE



Prestige
ROOFING & CLADDING
SUPPLIES PTY LTD

PRCS NAIL STRIP PANEL INSTALLATION GUIDE

IMPORTANT NOTICE:

This is the PRCS Nail Strip Panel Installation Guide (Installation Guide) which provides information in relation to the handling, storage, installation and maintenance of the PRCS Nail Strip Panel System (Panel System) manufactured by Prestige Roofing & Cladding Supplies Pty Limited (PRCS).

Read this Installation Guide in full before commencing installation of the panel system. The installation guide must be complied with in full to ensure appropriate warranties remain in effect.

Always inspect each and every panel and all accessories before installation. Never install any panel if there are any signs of imperfection. You must notify PRCS promptly if any panel is not as specified or has been damaged during transport.

Before beginning installation of any panels, the installer should examine the substrate and framing to ensure that all supporting members are straight, level, and plumb to avoid any panel distortion. All substructures should be designed to meet all national construction code (by Australian building codes board) and Australian standards necessary requirements.

The installer should thoroughly familiarize himself with all installation instructions before starting work.

The installation guide does not cover every instance, building requirements, designs or codes. It is the responsibility of the designer/installer to ensure that the details meet particular building requirements.

The designer/installer must be aware of, and allow for, expansion/contraction of panels. The details may require changes or revisions due to each project's conditions.

Each panel should be installed plumb, straight, and accurately to the adjacent work.

Some field cutting and fitting of panels and trim is to be expected by the installer and minor field corrections are a part of normal installation work.

Installation procedures and penetrations by fasteners in the panel system shall be in approved by PRCS prior to execution, in form of written guidelines, details or the approved shop drawings. Trim shall be installed true, and in proper alignment, with any exposed fasteners equally spaced for the best appearance.

Closures shall not be attached unless the proper sealant is placed under or around these closures. Sealants shall be field applied on dry, clean surfaces.

All trims, closures, and accessories shown on the installation drawings can be provided by Prestige Roofing and Cladding Supplies, unless noted otherwise.

Oil canning in the flat area of the panels is common to the industry and shall not be a cause for panel rejection. For more information about oil canning go to www.prcs.com.au

All installation works to be carried in accordance to national code of construction of Australia and Australian standards including:

- AS 1562.1 – design and installation of sheet roof and wall cladding
- SA HB 39:2015 – installation code for metal roof and wall cladding
- AS 2180 – metal rainwater goods – selection and installation
- AS 2179.1 – specification for rainwater goods, accessories and fasteners metal shape or sheet rainwater goods, and metal accessories and fasteners
- AS 3500.3 – plumbing and drainage stormwater drainage

Where modifications to size, scale or shape or additions to any product detail provided on this manual is to be incorporated onto onsite installation details, it is up to the installer to make it in accordance to code and standards abovementioned. Prestige Roofing and Cladding Supplies will not be responsible for any work carried out without following guidelines provided on this manual or outside of national code of construction and / or Australian standards stated above.

TABLE OF CONTENTS:

- A. PRCS NAIL STRIP CHARACTERISTICS
- B. PRCS NAIL STRIP PROFILE DETAILS
- C. MATERIAL OPTIONS
- D. HANDLING, STORAGE AND SAFETY
- E. PANEL FIXING PROCEDURE
- F. FLASHINGS
- G. FLASHINGS / TRIM DETAILS – VERTICAL PANEL ORIENTATION
- H. FLASHINGS / TRIM DETAILS – HORIZONTAL PANEL ORIENTATION
- I. RECOMMENDED WALL BUILD-UP
- J. RECOMMENDED INSTALLATION SEQUENCES
- K. WARRANTY AND MAINTENANCE
- L. DISCLAIMER

A. PRCS NAIL STRIP CHARACTERISTICS

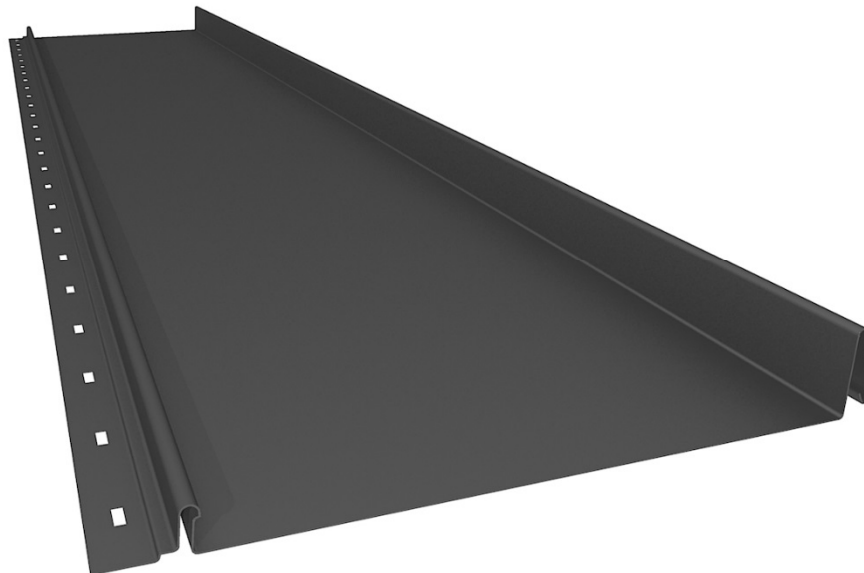
PRCS NAIL STRIP panels are a contemporary and cost-effective solution to architectural metal cladding, especially when trying to mimic the traditional standing seam look.

Our panels are manufactured in-house with our own roll forming machines, giving us the ability to control all aspects of their fabrication process.

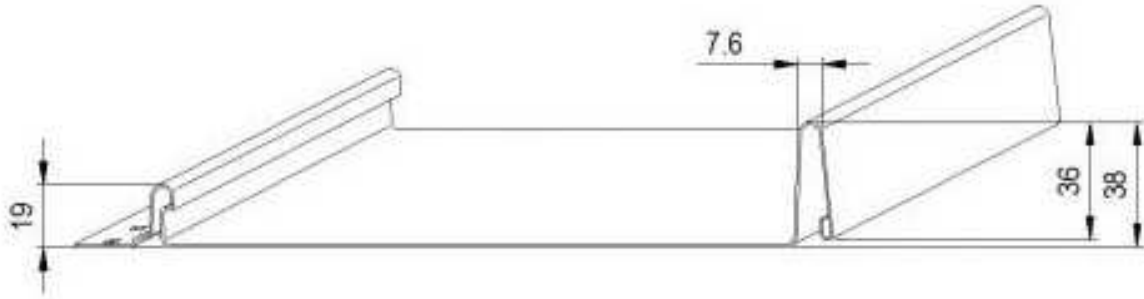
The panels are of easy installation if compared to standing seam but must be installed by appropriately licensed tradespeople. The system comprises of a panel with a bottom slotted side and a top side of pan, which is fixed through the slots on male side to a continuous substrate support (usually plywood) with the use of screws or nails (hence the name of the system). Once bottom side is fixed, the top side of next panel is then fixed over by applying pressure until a “click” is obtained, so no seaming or folding is necessary.

The panel has very distinct lines created by its 38mm high seams/ribs and can be used for cladding applications only. Utilising a range of pre-designed flashings, these panels can assist any designer, architect, roofer, builder and homeowner to achieve an amazingly looking project for much less cost if compared to traditional standing seam cladding.

PRCS Nail Strip can be manufactured in a variety of options of metals and finishes, including Colorbond®, Colorbond Ultra®, Colorbond Matt®, Aluminium and Zinalume.



B. PRCs NAIL STRIP PANEL PROFILE DETAILS



TECHNICAL SPECIFICATIONS

MAXIMUM PANEL LENGTH	4 METRES
SUBSTRATE	15MM PLYWOOD SUBSTRATE
SEAM / RIB HEIGHT	38MM
FIXING METHOD	SCREW/NAIL FIXING THROUGH SLOTTED HOLES ALONG BOTTOM SIDE OF PAN
FASTENERS	FOR ALUMINIUM & COLORBOND = 25MM CSK RIBBED HEAD SCREWS
PAN SIZE (CENTRE TO CENTRE OF SEAMS)	259 AND 459MM
BREATHABLE WATERPROOFING MEMBRANE	REQUIRED BETWEEN PLYWOOD SUBSTRATE AND NAIL STRIP PANEL TO ALLOW FOR MOISTURE RESULTING FROM MINOR RAINWATER INGRESS AND CONDENSATION TO DISSIPATE
SPACER MAT	OPTIONAL (HELPS REDUCING VISUAL ASPECT OF OIL CANNING)

C. MATERIAL OPTIONS

PRCs Nail Strip panels can be manufactured out of:

ALUMINIUM – 284 and 484mm pans

0.7mm Aluminium – various colours available

COLORBOND – 284 and 484mm pans

0.55 Colorbond range

0.55 Colorbond Ultra range

0.55 Colorbond Matt range

ZINCALUME – 284 and 484mm pans

0.55 Zinalume

D. HANDLING, STORAGE AND SAFETY

Check delivery for damage or missing quantities immediately. Promptly notify PRCS if there is any damage or missing pieces.

Always wear gloves when handling panels, and wear soft, non-marking, soled shoes when walking on them to avoid scratches and marks on material. When walking over panels, always step on pans, never on ribs/seams.

Panels must be stored in dry, well ventilated area, away from the elements. To keep condensation to a minimum, make sure panels are elevated at one end for runoff from any condensation that may occur. Do not store panels where they may get wet.

Do not store panels in direct contact with the ground or anywhere where they can get wet. Protect panels from soil, fertilizers and any abrasive cleaning products.

Panel bundles should be unloaded with forklifts. Forks should be placed far apart and panel bundles picked up at centre of gravity. For longer panel bundles (7m or above), use fork lift with spreader bar.

Do not walk on panel seams / ribs. Walk only in the flat areas of the panels.

Wear proper clothing and safety attire at all times when on site.

Do not handle panels on extremely windy days. Panels can become lifting objects and can lift individuals off of roof, or become airborne and fall causing accidents.

Metal panels can be slippery when wet or dusty. Do not work on a metal roof when these conditions persist. Soft Soled shoes will help minimise slipping and reduce damage to panel finish.


Be aware of surroundings: i.e. overhead electrical wires, roof pitch, roof edges, scaffolding, other labour staff, antennas, openings and any other possible obstructions.

E. PANEL FIXING PROCEDURE

PRCS Nail Strip Panel System is supplied with a slotted side to allow for screws to fix the panel directly onto substrate.


Installation should be done in the following way:

1) Assure plywood substrate is straight and true/levelled over main structure
2) Fully cover substrate with breathable waterproofing membrane



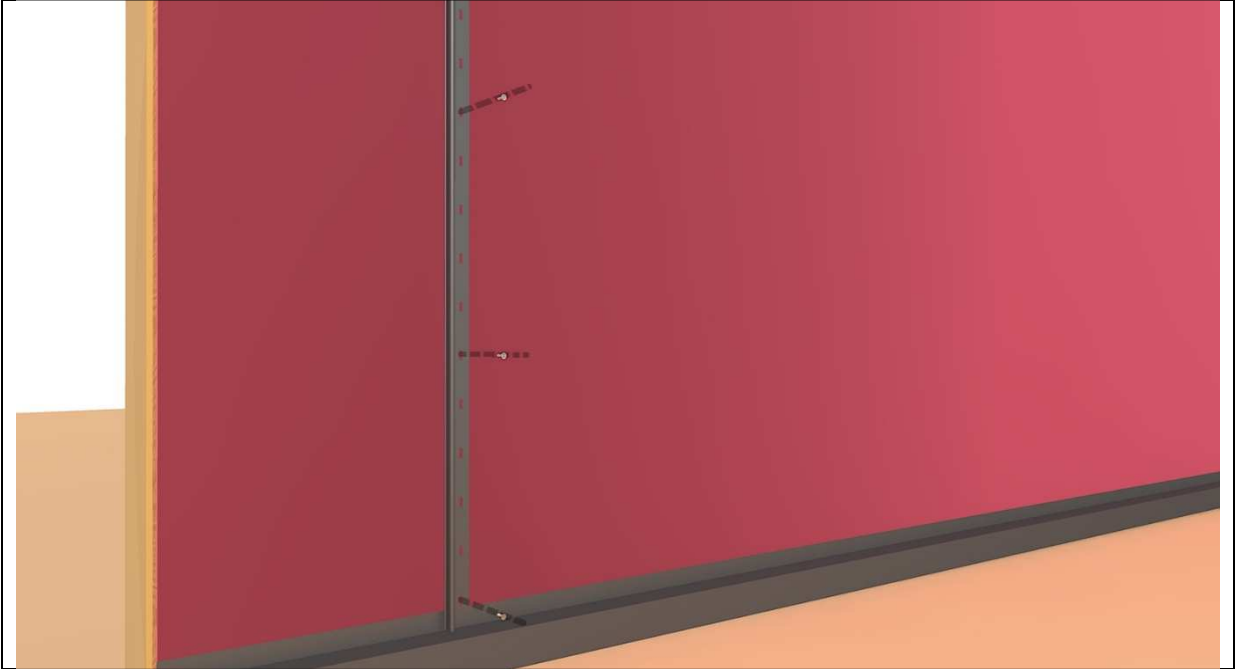
The diagram illustrates the first two steps of the installation. On the left, a vertical wooden post is shown. To its right, a light brown rectangular block represents the plywood substrate. A dark grey waterproofing membrane is applied over the substrate, sloping downwards from left to right. The area above the membrane is a solid red color, representing the waterproofing layer.

3) Once substrate is waterproofed, lay the PRCS Nail Strip Starter flashing and assure it is straight.
--

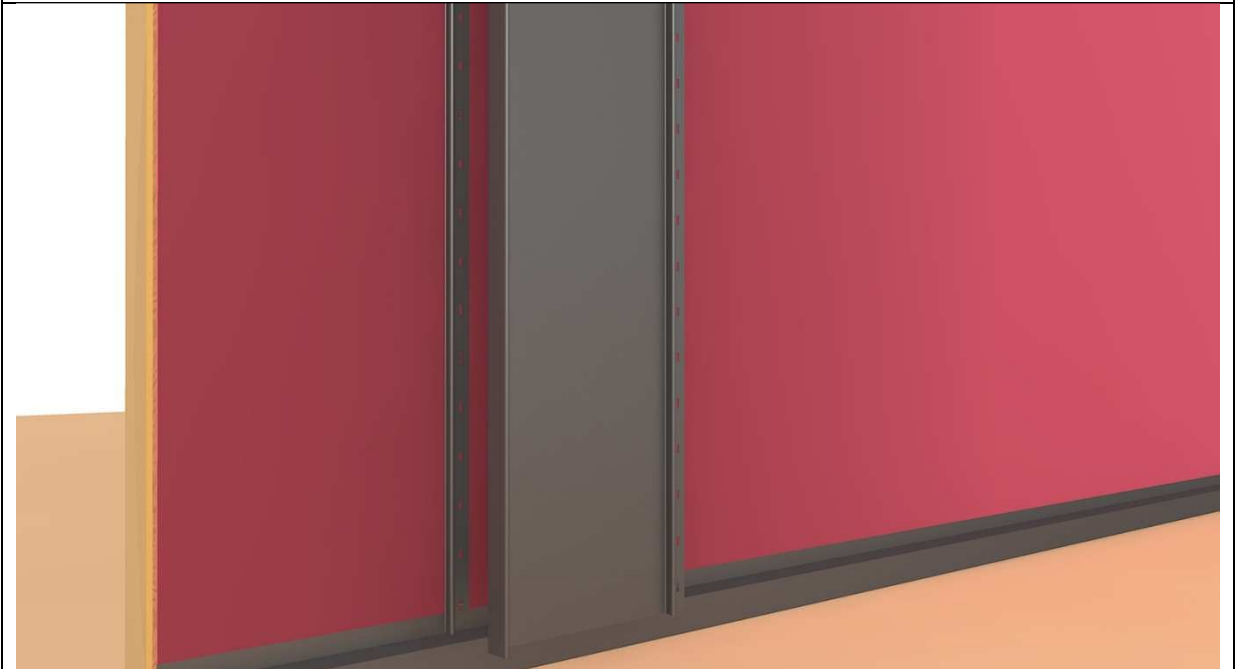


The diagram illustrates the third step of the installation. A vertical grey strip, representing the PRCS Nail Strip Starter flashing, is applied over the red waterproofing membrane. The strip is positioned vertically, extending from the top to the bottom of the frame. The background remains the same as in the previous diagram, with the wooden post on the left and the sloping membrane below.

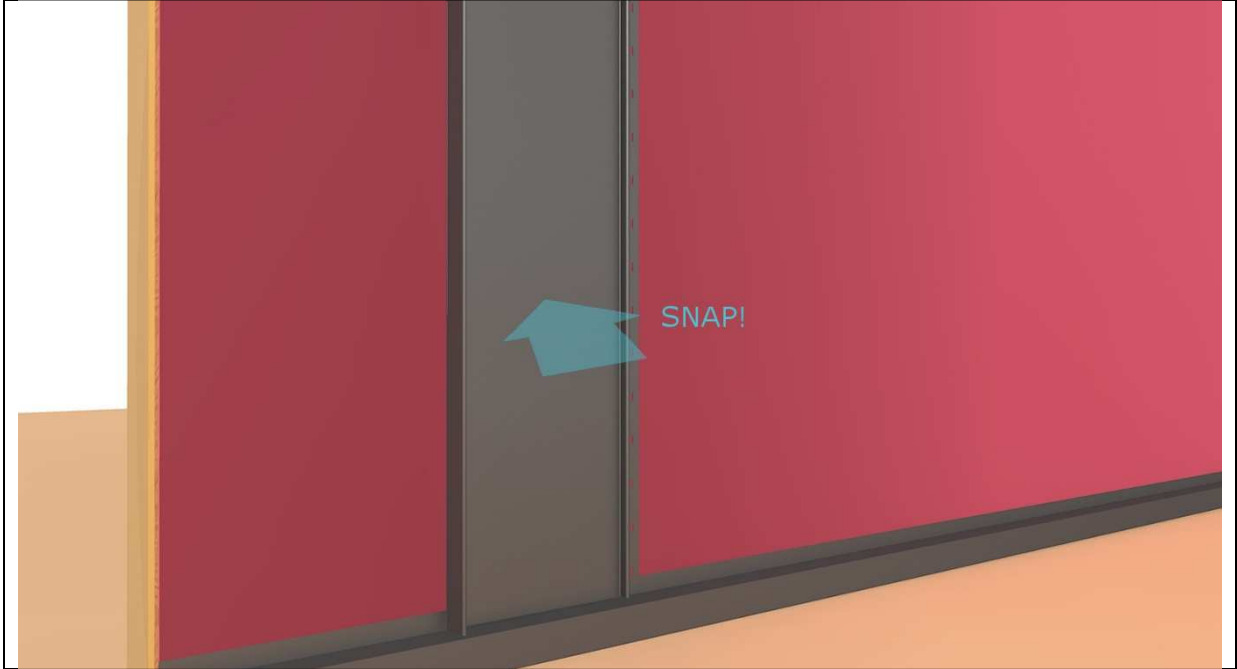
4) Fix the PRCS Nail Strip Starter flashing by screwing it on slotted holes



5) Once starter strip is fixed, position the first PRCS Nail Strip Panel over the starter strip



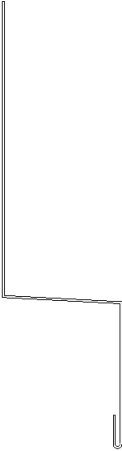
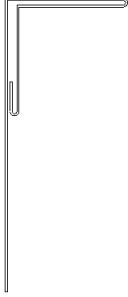
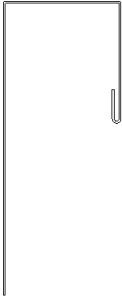


6) Press the PRCS Nail Strip panel over the starter strip until it "snaps" in place



7) Fix the panel and repeat steps until wall is fully covered

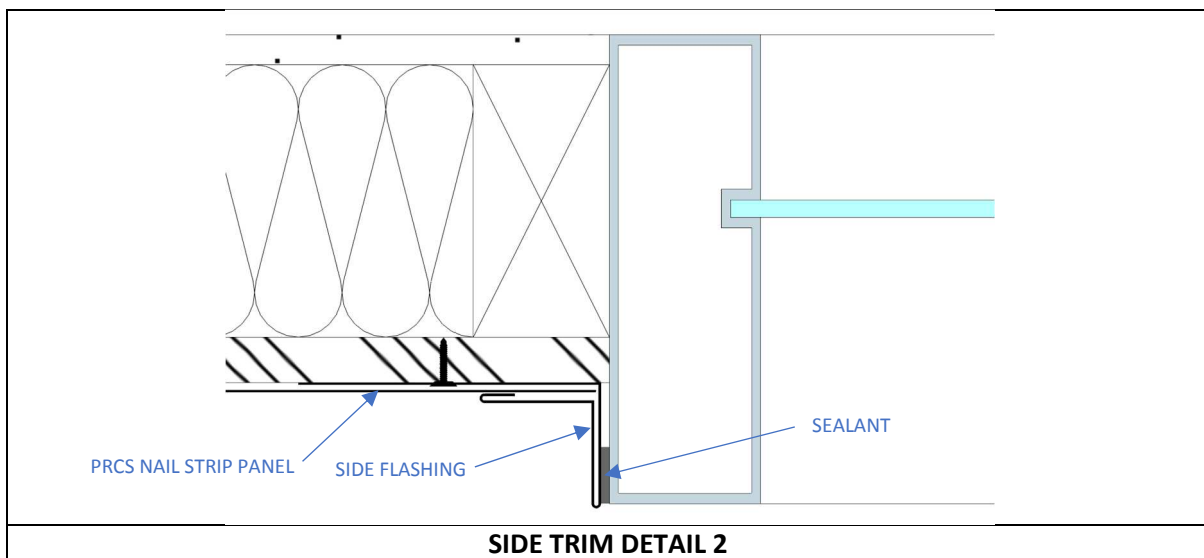
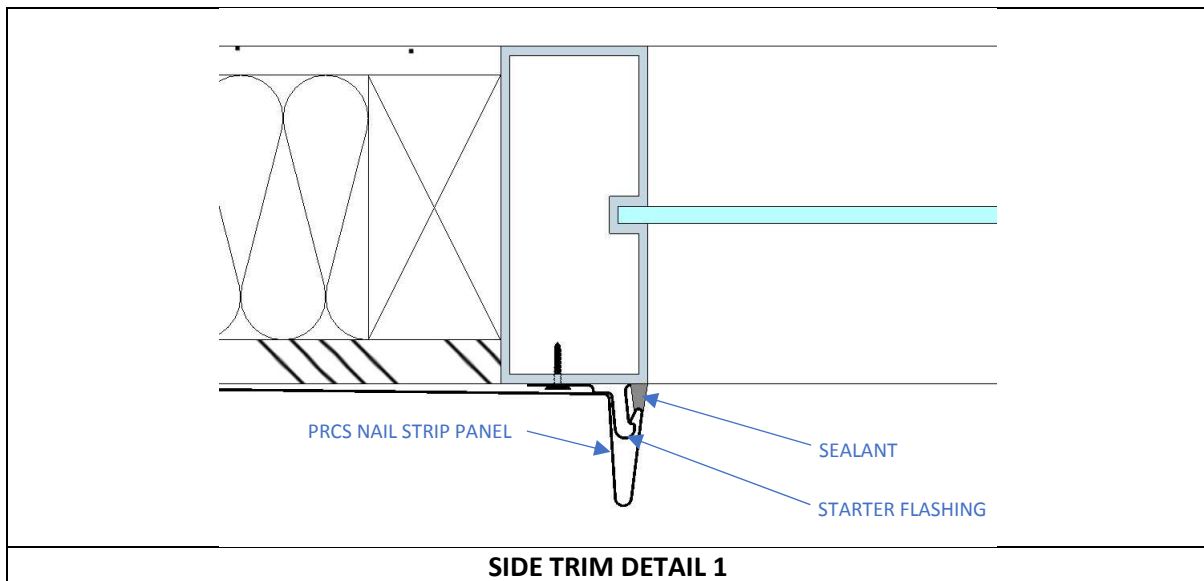


F. FLASHINGS

	
<p>BOTTOM FLASHING</p>	<p>SIDE / TOP FLASHING</p>
	
<p>TOP/SIDE FLASHING</p>	<p>PARAPET CAPPING</p>
	
<p>MALE/BOTTOM ONLY STARTER FLASHING</p>	

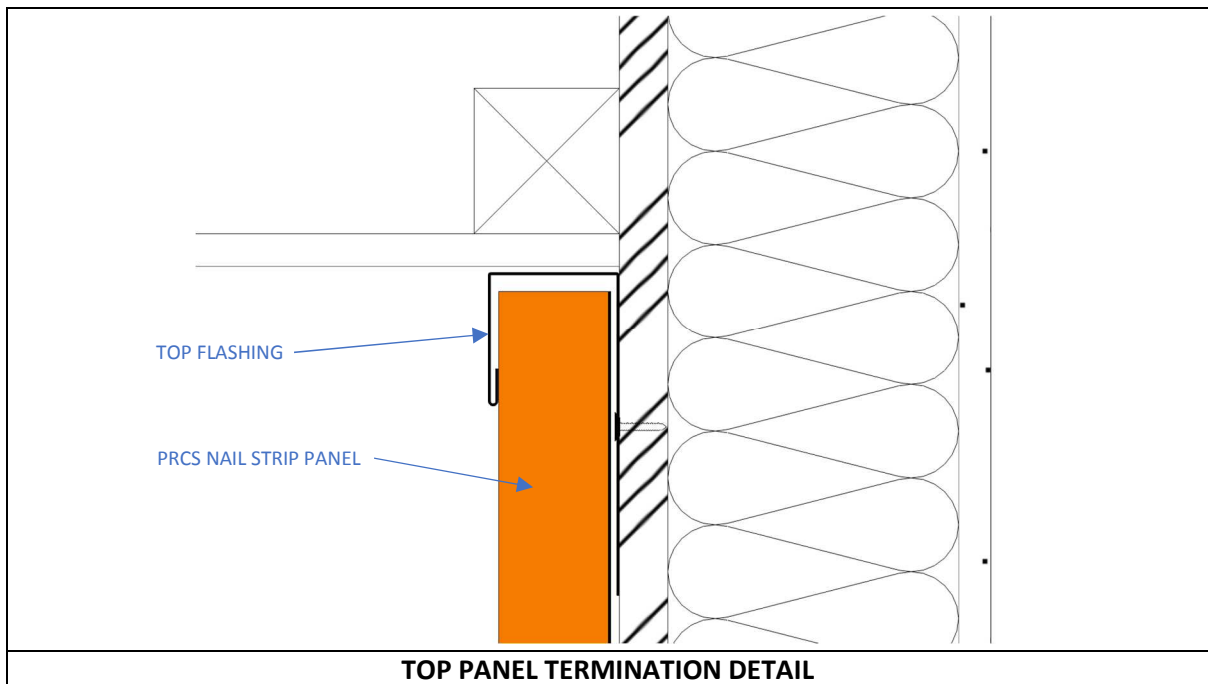
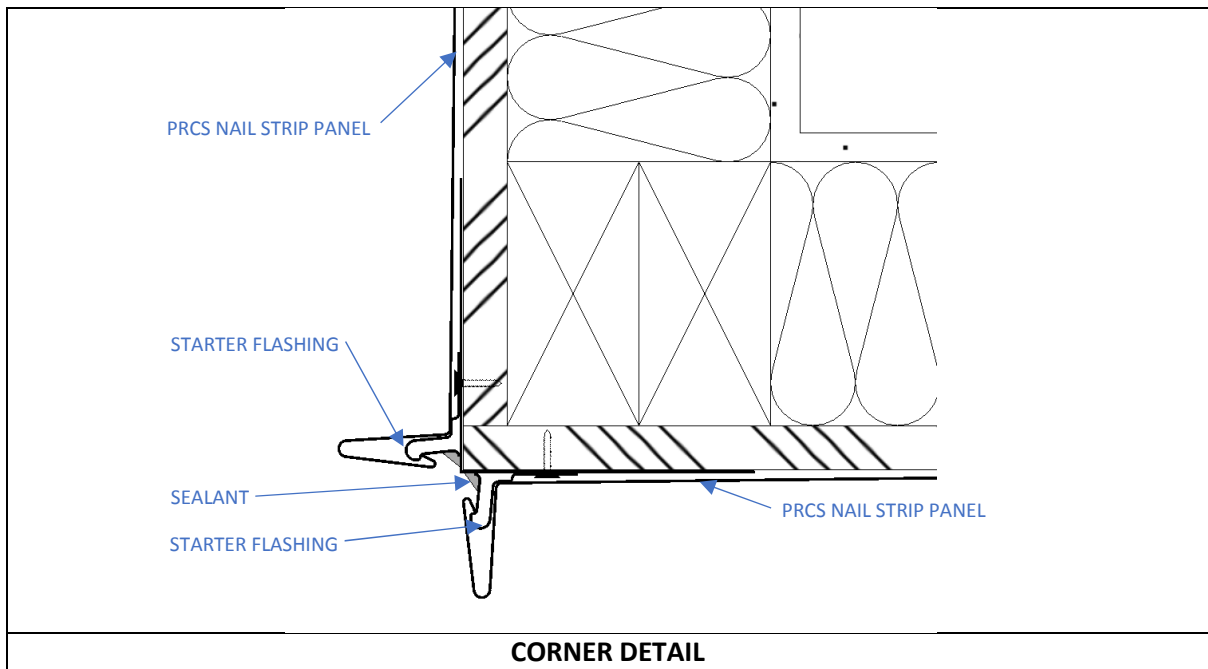
All suggested flashings are a guide only. It is responsibility of the installer to assure compliance with Australian Standards and National Construction Code. Prestige Roofing and Cladding Supplies is not to be hold responsible for issues resulting from misuse of the information provided on this manual or any alteration to shape and size of proposed flashings.

G. FLASHINGS / TRIM DETAILS – VERTICAL PANEL ORIENTATION



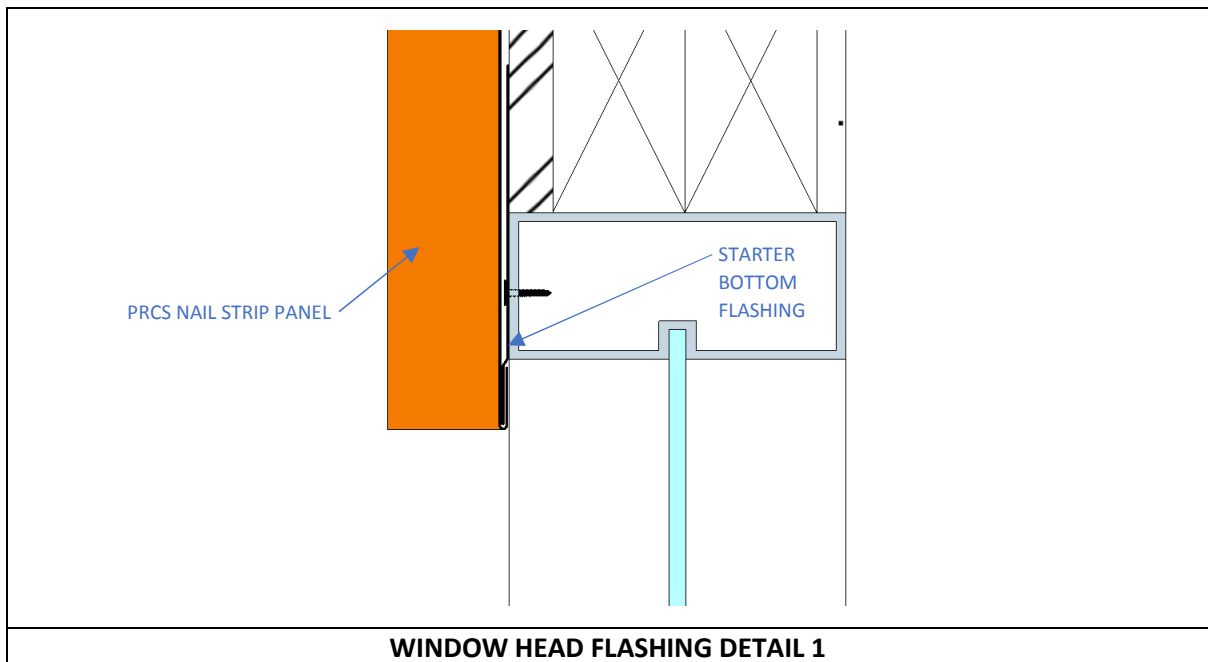
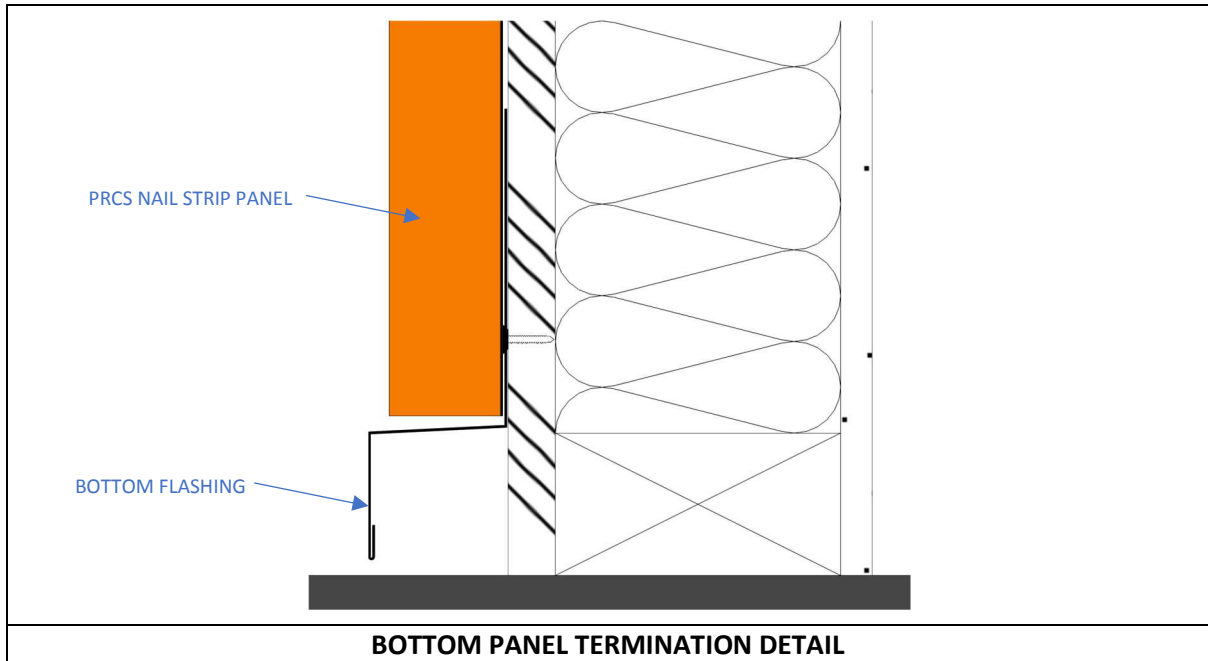
Breathable waterproofing membrane not shown for clarity.

All suggested flashings are a guide only. It is responsibility of the installer to assure compliance with Australian Standards and National Construction Code. Prestige Roofing and Cladding Supplies is not to be hold responsible for issues resulting from misuse of the information provided on this manual or any alteration to shape and size of proposed flashings.



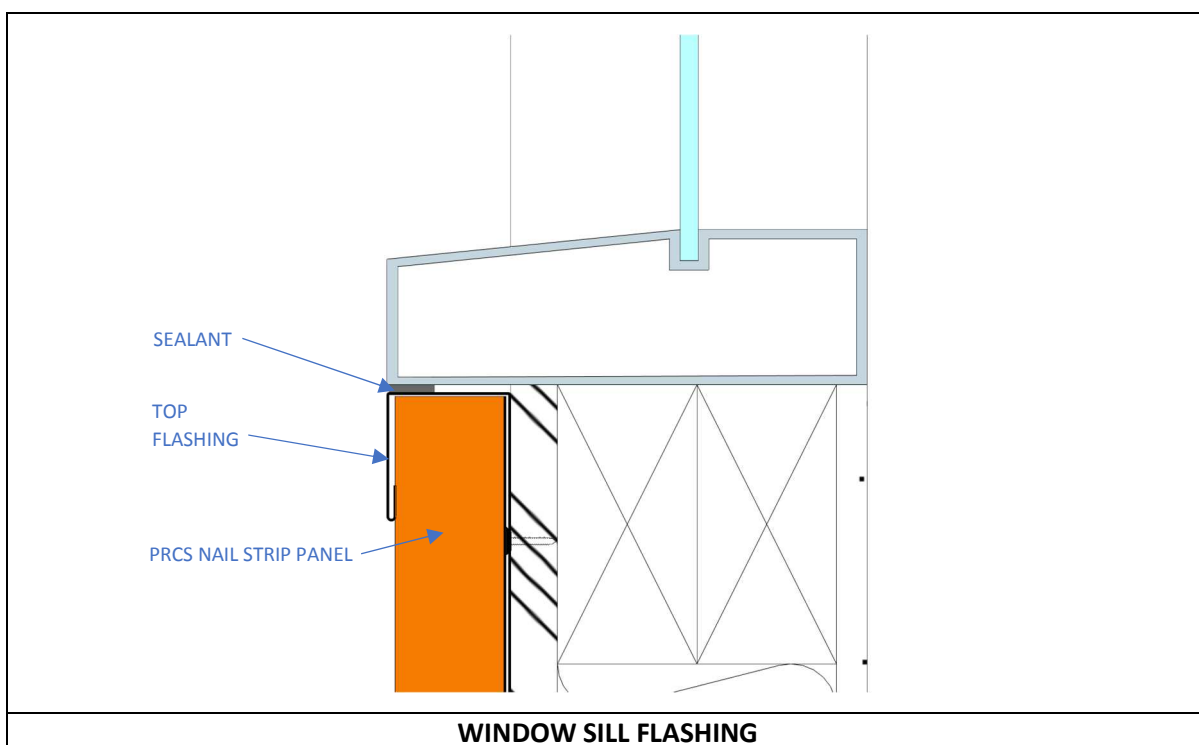
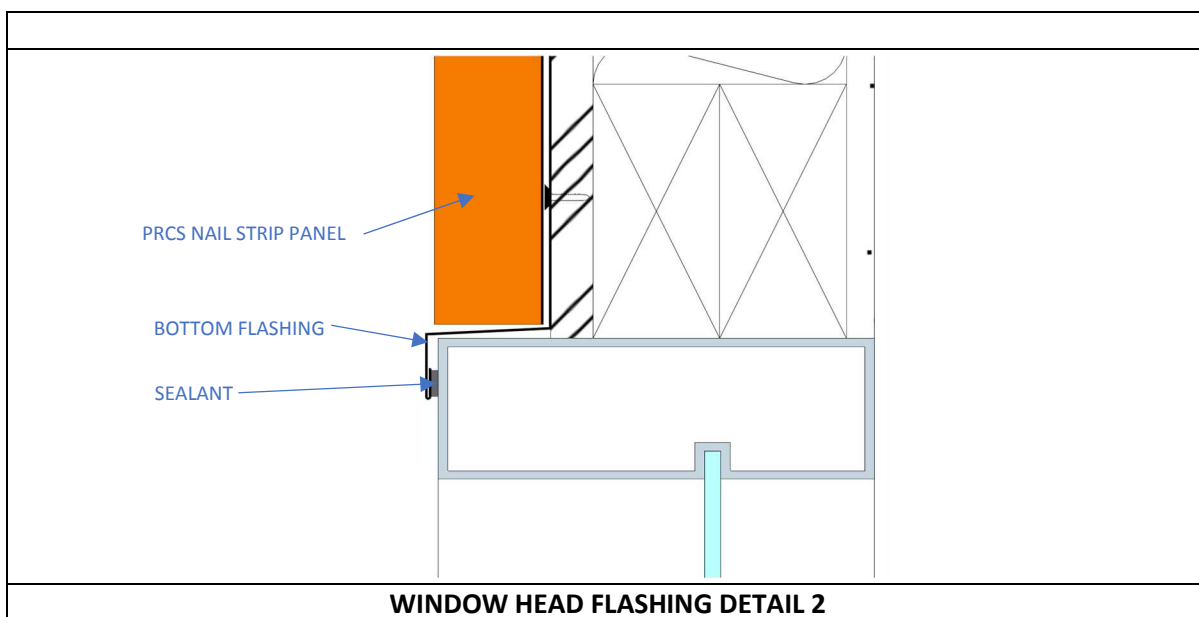
Breathable waterproofing membrane not shown for clarity.

All suggested flashings are a guide only. It is responsibility of the installer to assure compliance with Australian Standards and National Construction Code. Prestige Roofing and Cladding Supplies is not to be hold responsible for issues resulting from misuse of the information provided on this manual or any alteration to shape and size of proposed flashings.



Breathable waterproofing membrane not shown for clarity.

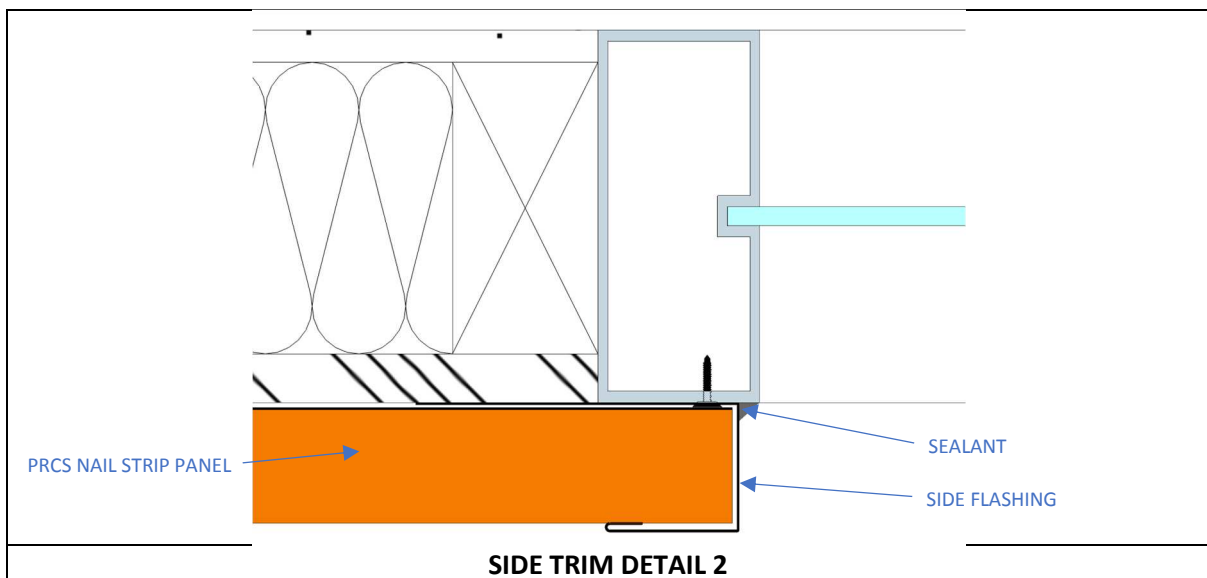
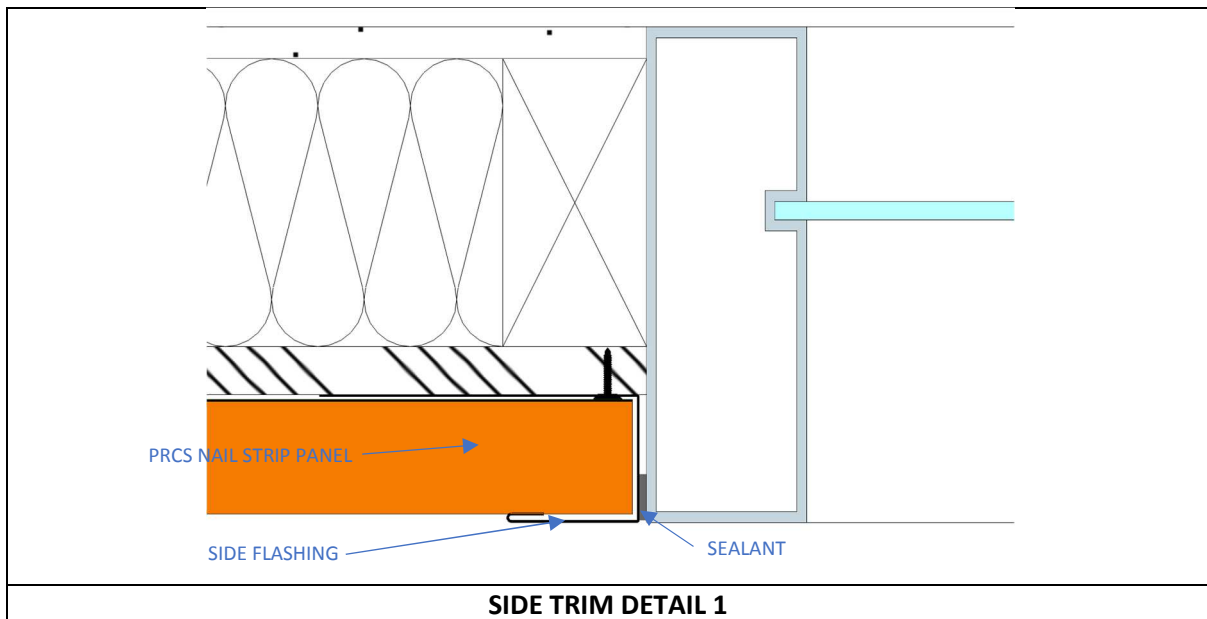
All suggested flashings are a guide only. It is responsibility of the installer to assure compliance with Australian Standards and National Construction Code. Prestige Roofing and Cladding Supplies is not to be hold responsible for issues resulting from misuse of the information provided on this manual or any alteration to shape and size of proposed flashings.



Breathable waterproofing membrane not shown for clarity.

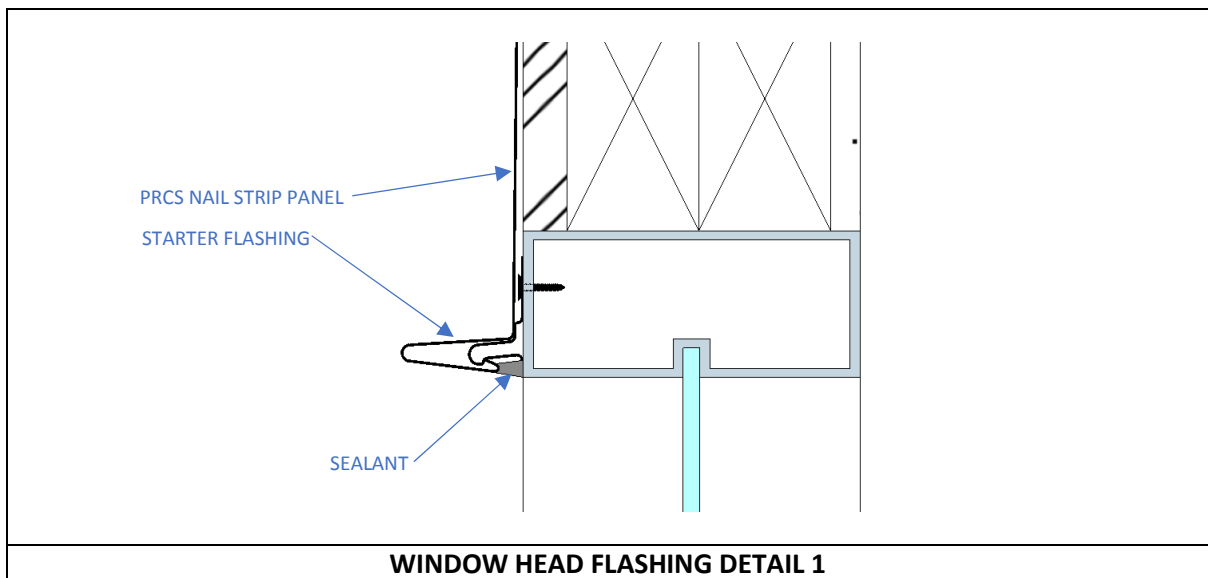
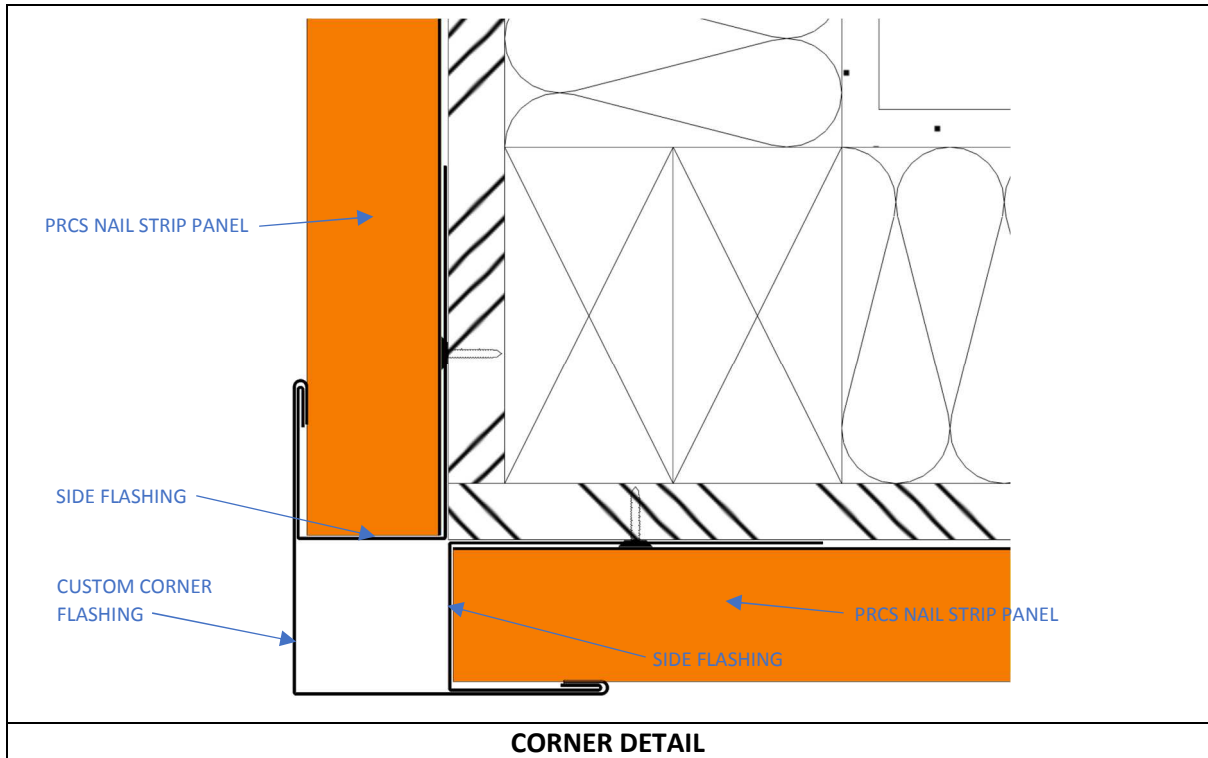
All suggested flashings are a guide only. It is responsibility of the installer to assure compliance with Australian Standards and National Construction Code. Prestige Roofing and Cladding Supplies is not to be hold responsible for issues resulting from misuse of the information provided on this manual or any alteration to shape and size of proposed flashings.

H. FLASHINGS / TRIM DETAILS – HORIZONTAL PANEL ORIENTATION



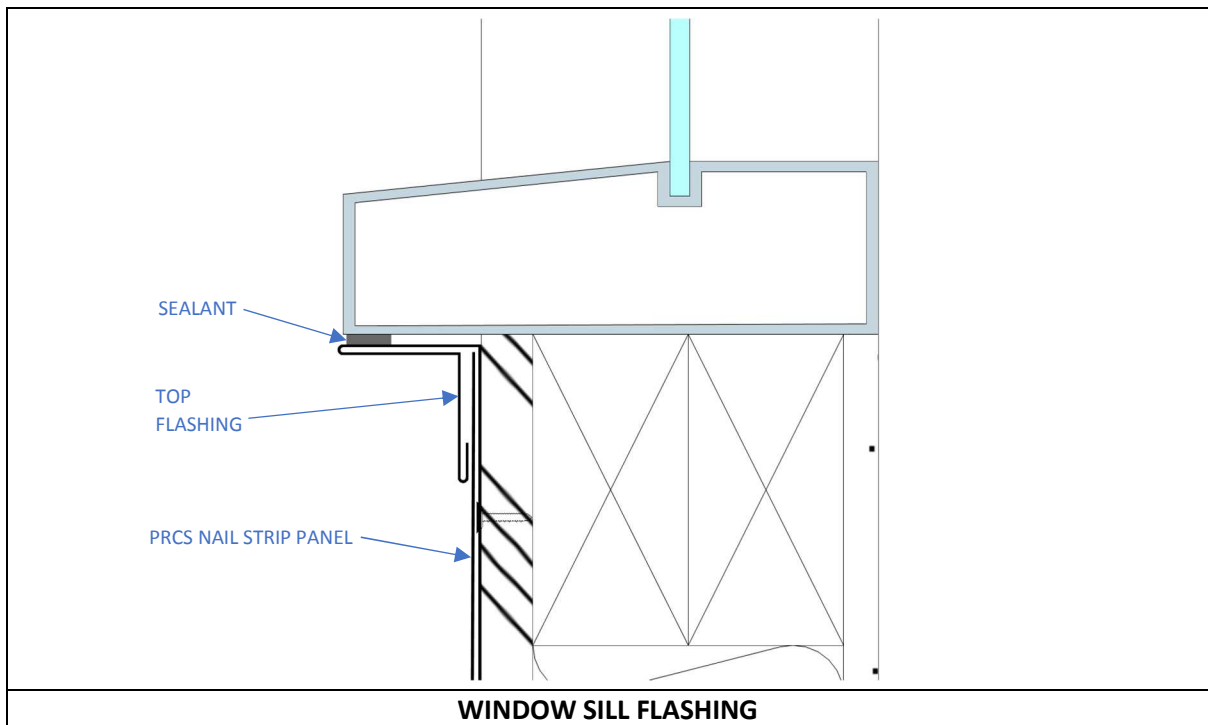
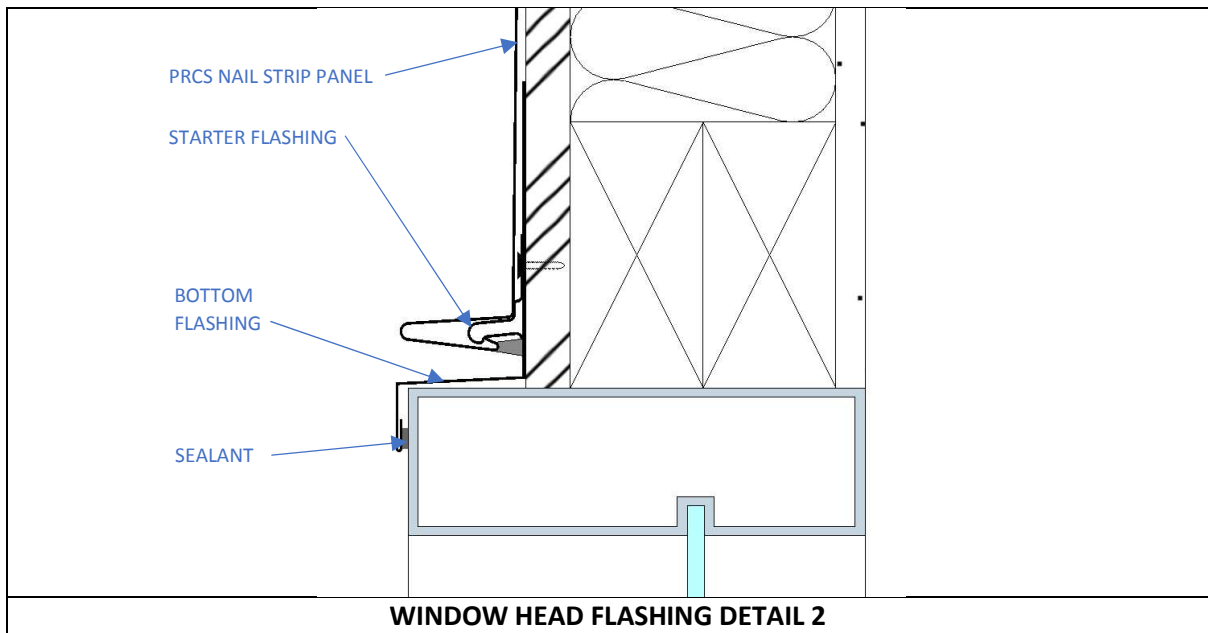
Breathable waterproofing membrane not shown for clarity.

All suggested flashings are a guide only. It is responsibility of the installer to assure compliance with Australian Standards and National Construction Code. Prestige Roofing and Cladding Supplies is not to be hold responsible for issues resulting from misuse of the information provided on this manual or any alteration to shape and size of proposed flashings.



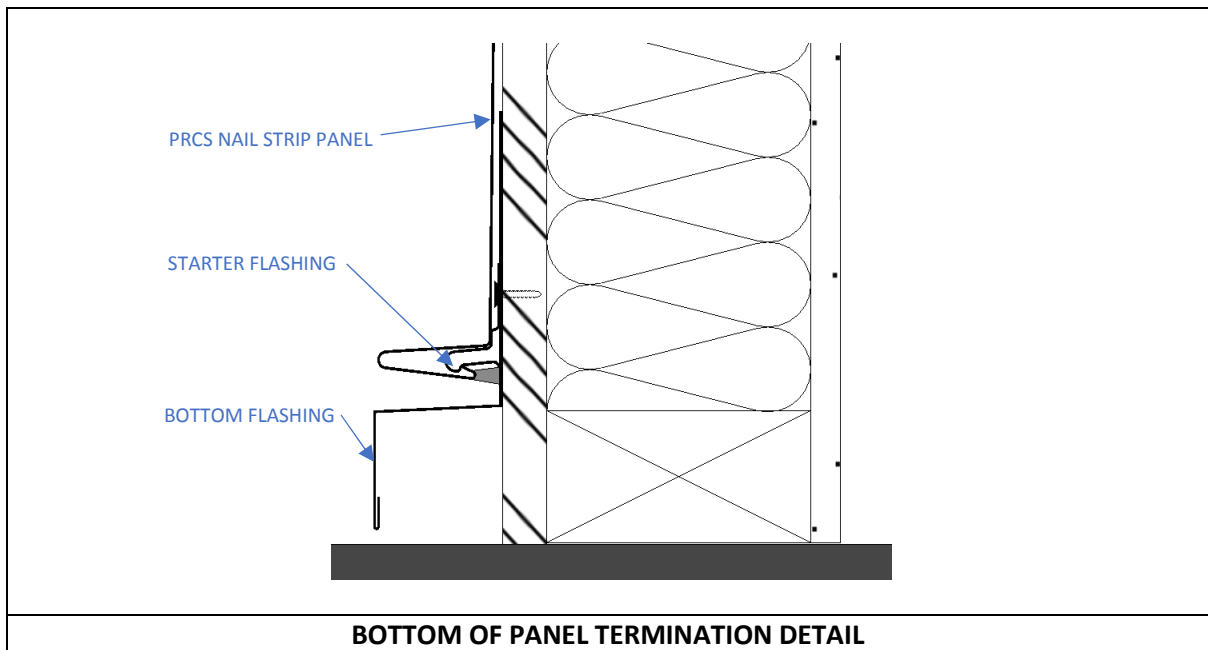
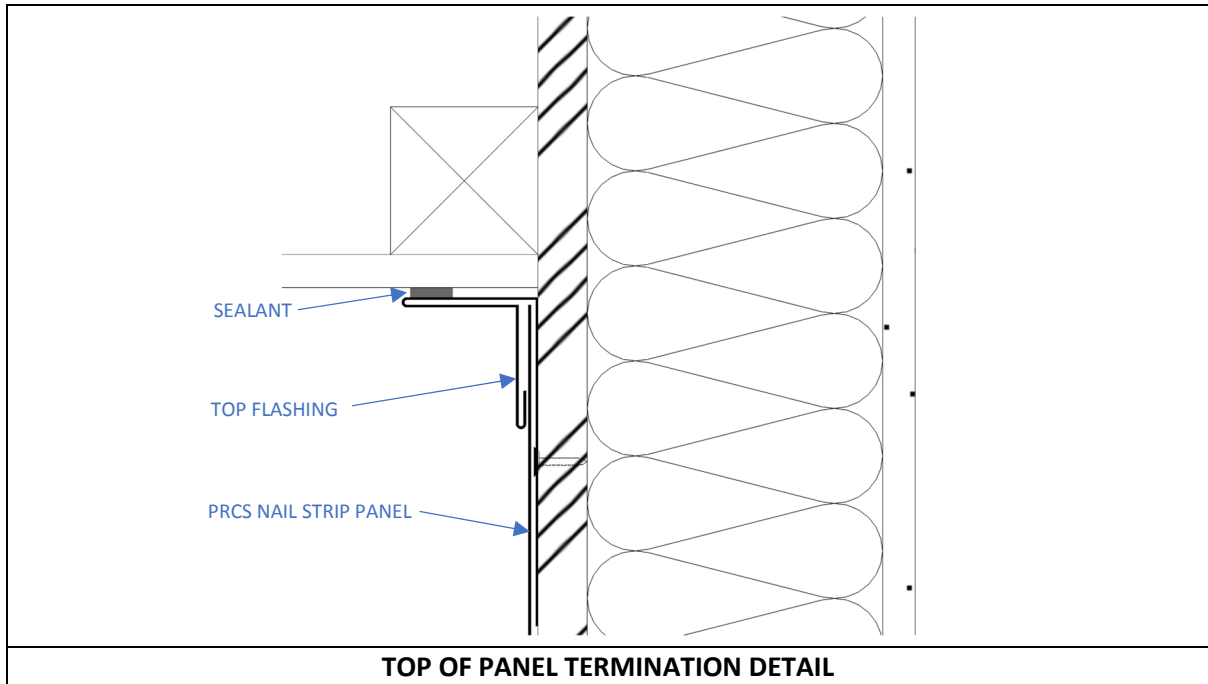
Breathable waterproofing membrane not shown for clarity.

All suggested flashings are a guide only. It is responsibility of the installer to assure compliance with Australian Standards and National Construction Code. Prestige Roofing and Cladding Supplies is not to be hold responsible for issues resulting from misuse of the information provided on this manual or any alteration to shape and size of proposed flashings.



Breathable waterproofing membrane not shown for clarity.

All suggested flashings are a guide only. It is responsibility of the installer to assure compliance with Australian Standards and National Construction Code. Prestige Roofing and Cladding Supplies is not to be hold responsible for issues resulting from misuse of the information provided on this manual or any alteration to shape and size of proposed flashings.



Breathable waterproofing membrane not shown for clarity.

All suggested flashings are a guide only. It is responsibility of the installer to assure compliance with Australian Standards and National Construction Code. Prestige Roofing and Cladding Supplies is not to be hold responsible for issues resulting from misuse of the information provided on this manual or any alteration to shape and size of proposed flashings.

I. RECOMMENDED WALL BUILD UP

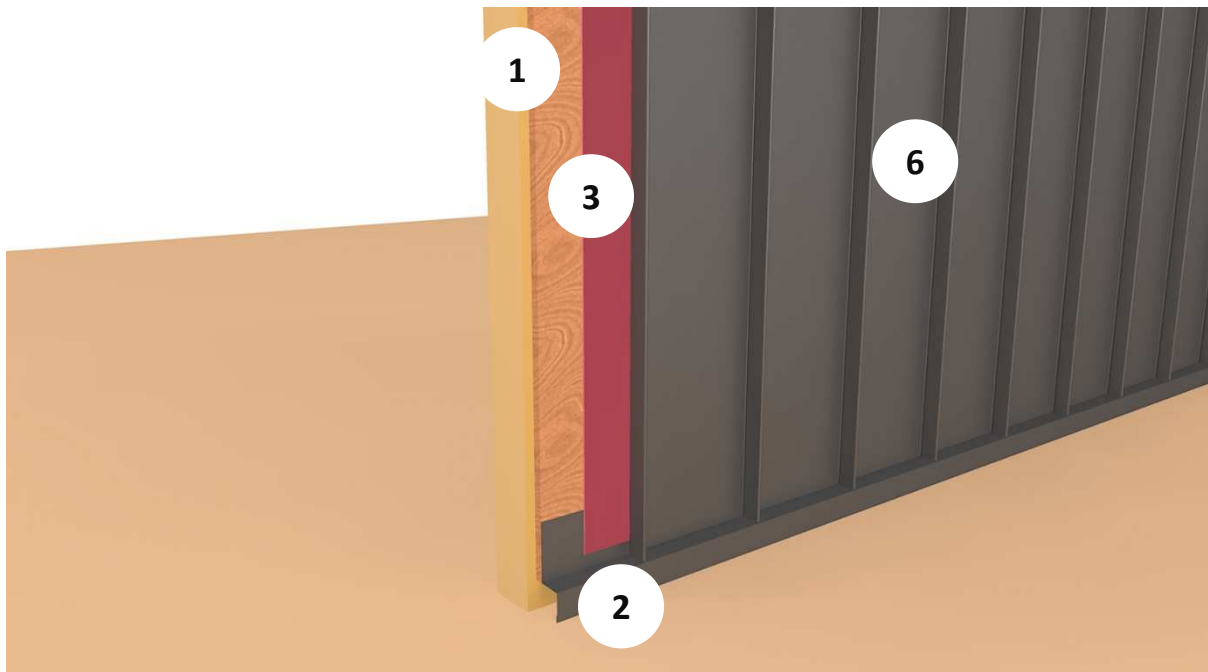
EXTERNAL SIDE

PRCS NAIL STRIP PANEL
BREATHABLE WATERPROOFING MEMBRANE
15MM PLYWOOD SUBSTRATE
ROOF STRUCTURE / INSULATION
VAPOUR BARRIER
INTERNAL WALL LINING

INTERNAL SIDE

J. RECOMMENDED INSTALLATION SEQUENCE*

- 1) 15mm Plywood substrate (over wall structure)
- 2) Bottom flashings
- 3) Breathable Waterproofing membrane
- 4) Side Flashings / Corners
- 5) Top Flashings
- 6) PRCS Nail Strip panels
- 7) Wall / Parapet Cappings



* General guide only. If a different scenario / order is required, then it is responsibility of the installer to assure compliance with Australian Standards and National Construction Code. Prestige Roofing and Cladding Supplies is not to be hold responsible for issues resulting from misuse of the information provided on this manual or any alteration to order of proposed flashings.

K. MAINTENANCE AND WARRANTY

PRCS Nail Strip Panels may be supplied with a warranty. The following maintenance procedures are a requirement of the warranty:

- PRCS Nail Strip panels have to be stored and safely handled as per section “D. HANDLING, STORAGE AND SAFETY” of this manual.
- During the installation, installers need to use adequate footwear, in accordance with Workplace Health Safety and specific site requirements are met and walk only on panel pans not onto its ribs/seams as to not scratch, bend, or deform PRCS Nail Strip panels.
- Once panels are installed, all debris, offcuts, extra sealants, fixings and other construction materials need to be completely removed from its surface.
- PRCS panels should not be installed directly under trees to avoid damage caused by falling branches or corrosion by dripping tree sap
- PRCS panels should not be installed by unqualified / uncertified contractors
- All flashings, fasteners or components fixed to or used with the PRCS Nail Strip panels must be supplied, or approved in writing to you, by PRCS.
- After installation all panels need to be regularly washed with fresh water in a period of no more than 6 months apart. If panels are not exposed to rainwater (including soffits, external awnings, bottom of gutters), then they will have to be hosed off with fresh water.
- Some materials react with salt water and will have restriction as to where they may or may not be used in marine environments. If you are unsure of which material selection is the best for your project, please contact PRCS.

L. DISCLAIMER

OIL CANNING: Expansion and contraction are natural occurrences to all metals once they face temperature variances. All metals will expand and contract at different rates and this can cause the panels to have a “wavy” aspect to them. This is not a defect but a natural occurrence when working with sheet metal.

TOLERANCES: Prestige will work to the closest of tolerance but reserves the right to a margin of 2.5mm tolerance on products and services provided.

MATERIAL DAMAGE BY OTHERS: Prestige cannot warrant nor accept any responsibility on any product once removed from the main premises of prestige for external treatment or other applications outside of the original manufactured state, not limited to the unknown use of products after purchase

For more information, please contact us:

PRESTIGE ROOFING AND CLADDING SUPPLIES

25 ETHEL AVENUE, BROOKVALE NSW

PHONE: 02 9939 5206 / FAX: 02 9939 5781